



# LT.LTB series

L.K Machinery Corp.

力盡淬鍊 勁是完美



L.K. Machinery Corp. (TAIWAN)

No.30, Keyuan Rd., Xitun Dist. Taichung City 40763, Taiwan(R.O.C.)

TEL: +886-4-24619797 FAX: +886-4-24611555

Email: lktw\_sales@lkmachinery.com.tw

CE ISO 9001  
ISO 14001

LT201902(E)

# ALL NEW **LT LTB**



## One-piece casting slant bed construction

Low center of gravity with 30 degree (LT) / 45 degree (LTB) slant bed construction ensure high rigidity and heavy cutting performance. Features efficient chip removal and convenient load/unloading workpiece.



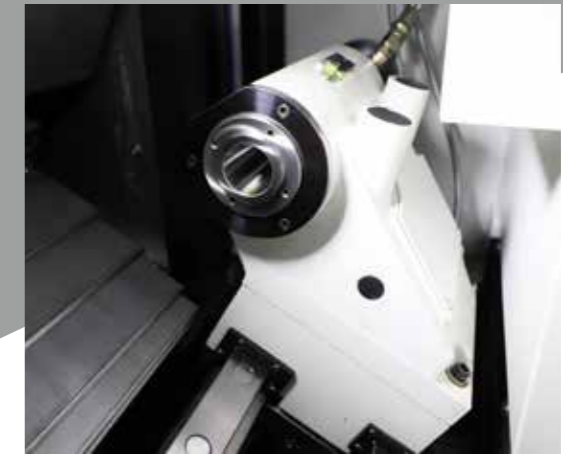
## >> High output and rigidity spindle

Precision angular contact ball bearing in spindle, combined with NNK ball bearing improves accuracy and rigidity. Heat dissipating design in spindle sleeve to reduce temperature.



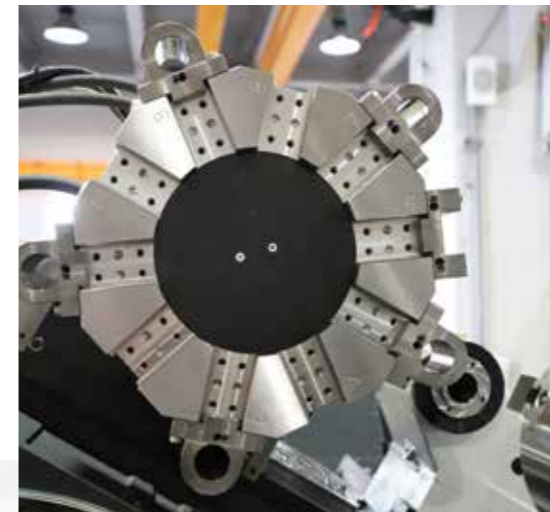
## Link type chip conveyor

Full enclosure sheet metal and chip conveyor side of machine, full prevention in coolant system.



## Programmable tailstock

Driven by saddle to remove (saddle of Z axis remove to drag tailstock based) Using high pressure clamping to positioning and ensure the rigidity of tailstock.



## High performance Turret

Turret positioning by high loading servo motor, T to T is only 0.41 sec.



## Barfeeder (optional)

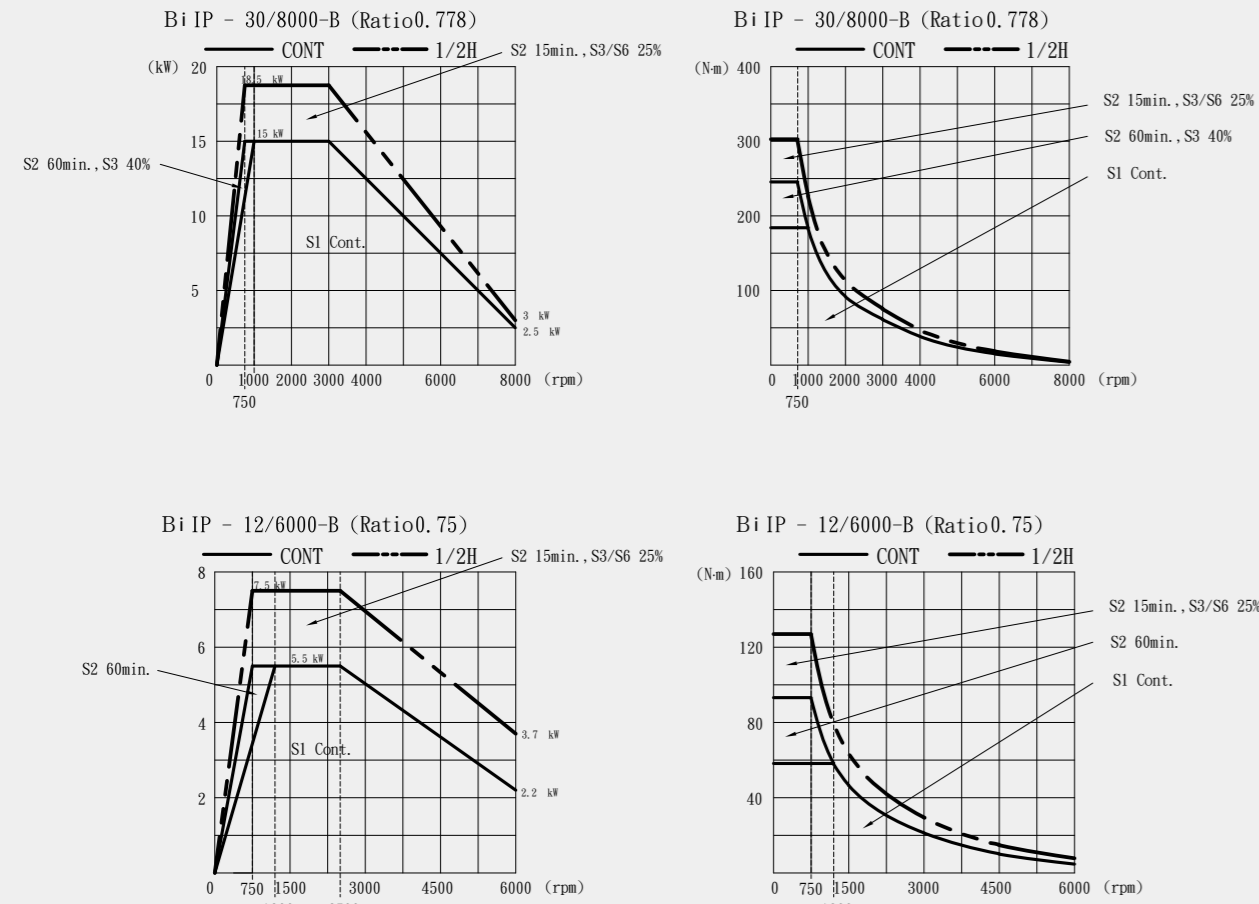
With interface to apply various barfeeder system. Create simple with efficient cutting system.



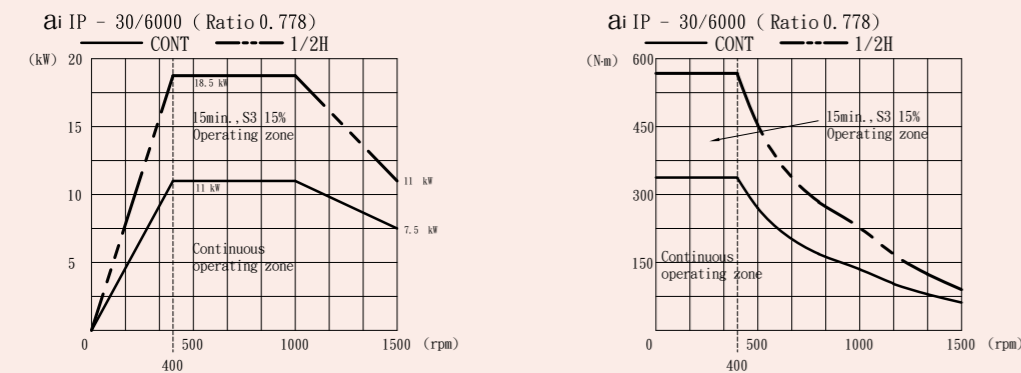


# Spindle Motor Torque Chart

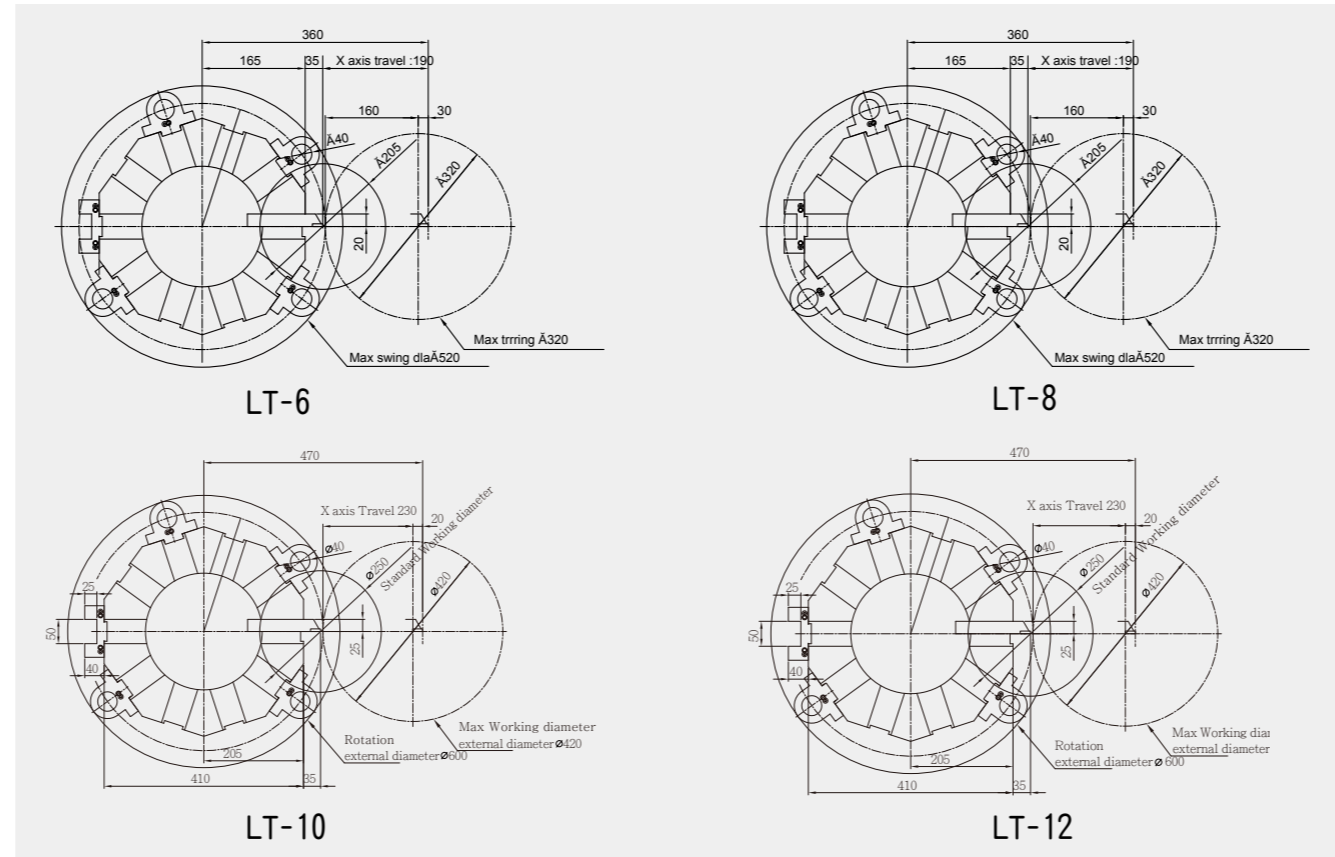
## Standard



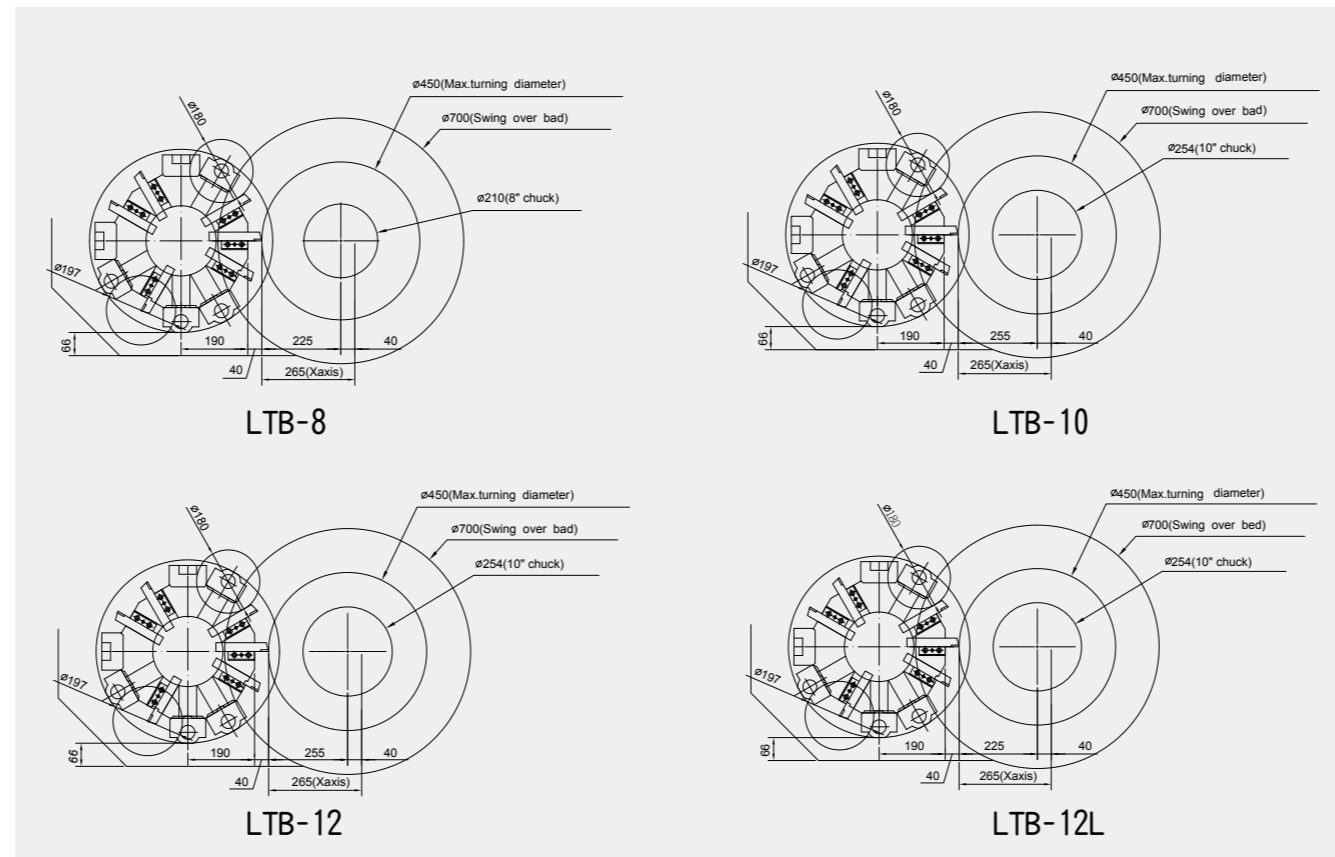
## Optional



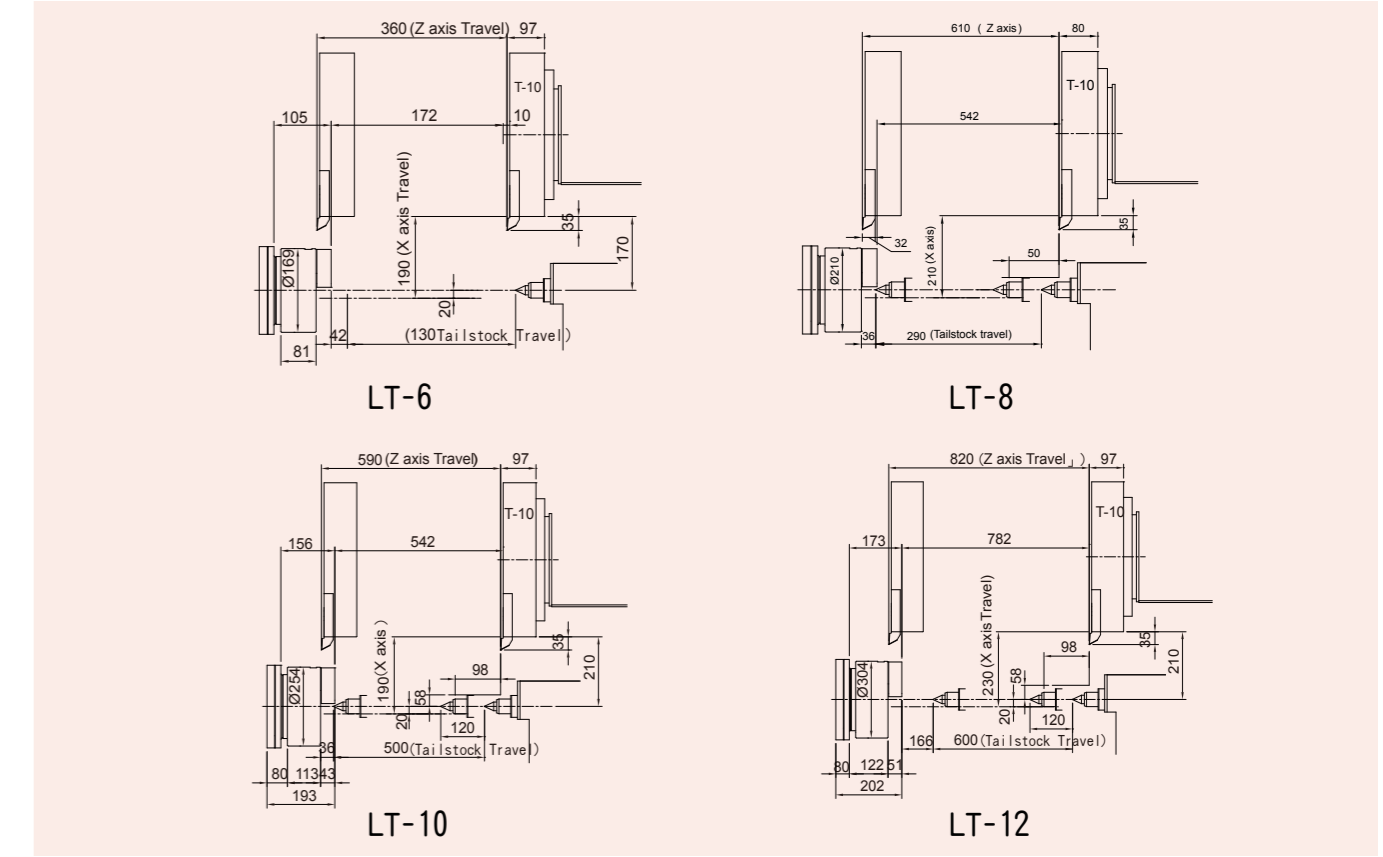
# LT Tools Dimension



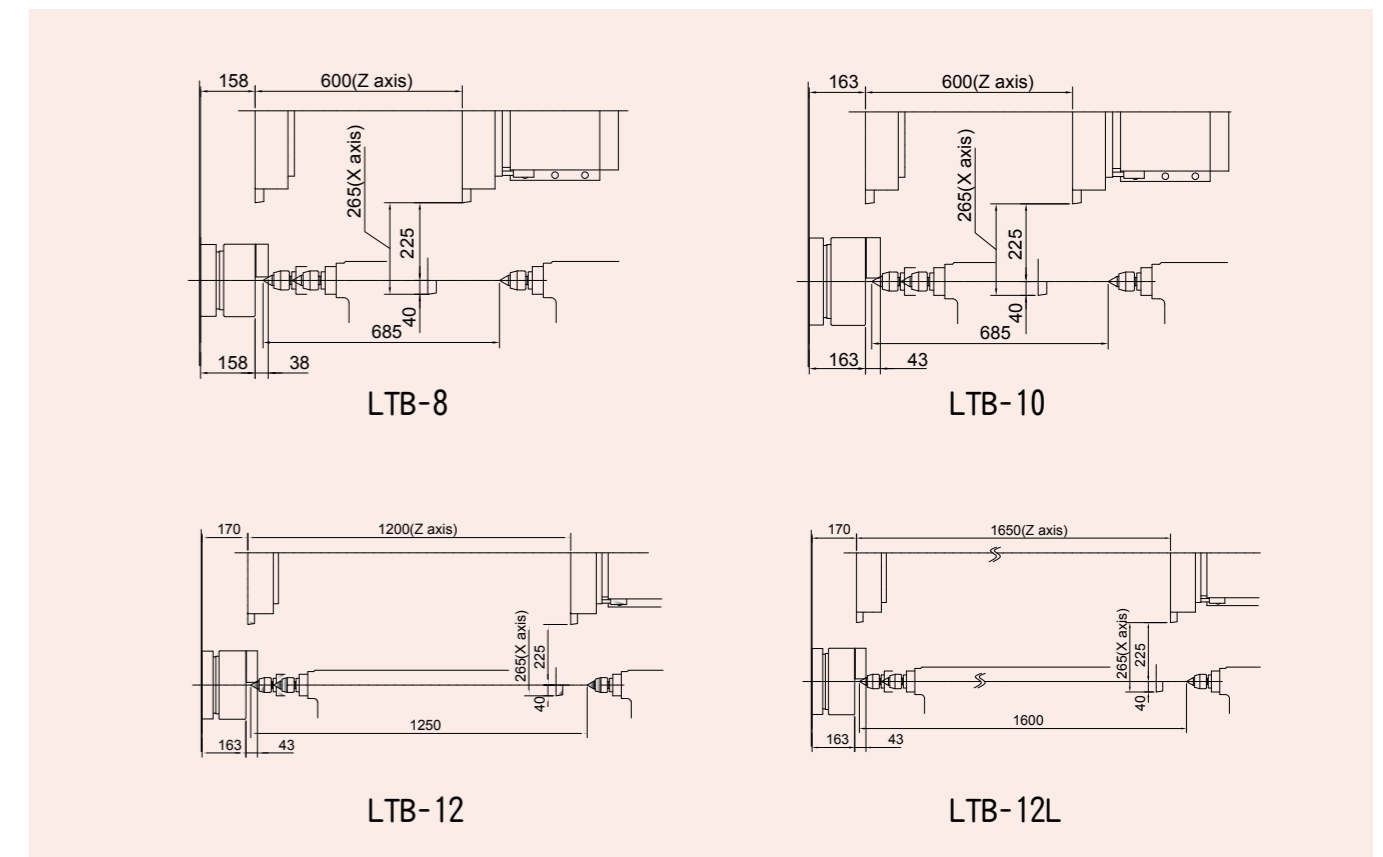
# LTB Tools Dimension



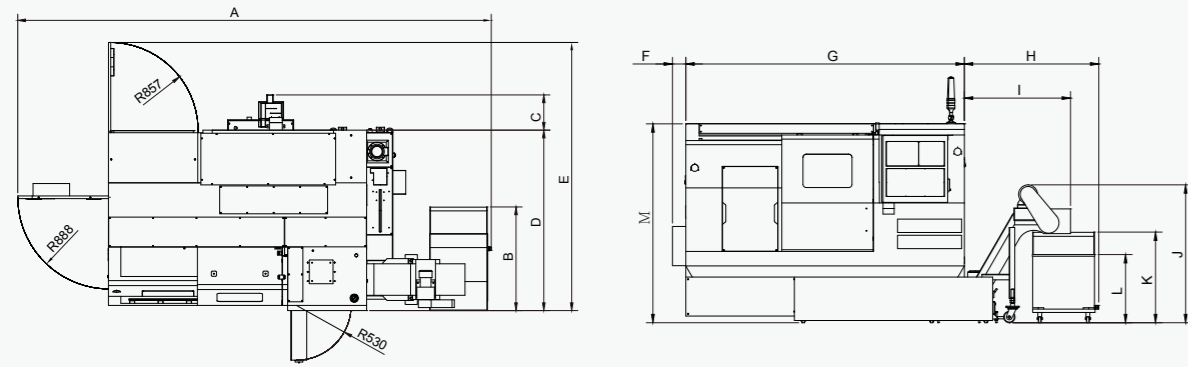
# LT Interference Area



# LTB Interference Area



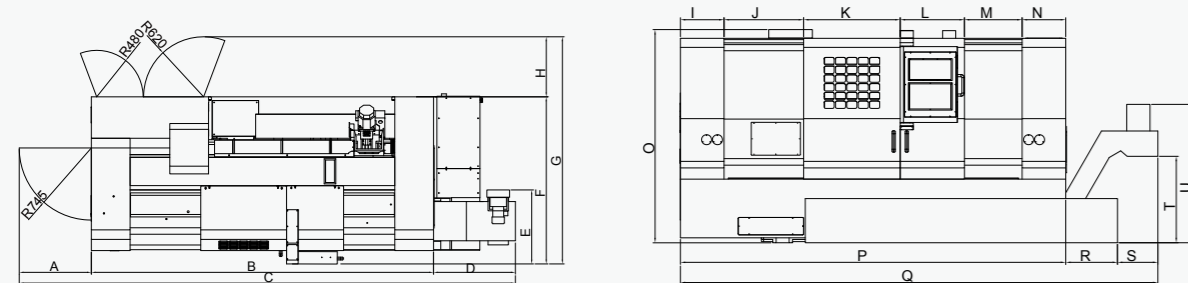
## LT Machine Floor Plan



Model	Unit	A	B	C	D	E
LT-6	mm	120	936	341	1740	2420
LT-8		4585	936	341	1747	2600
LT-10		4450	936	341	1570	2600
LT-12		5200	936	341	1570	2600

Model	Unit	F	G	H	I	J	K	L	M
LT6	mm	120	2210	963	62	1133	851	612	1797
LT8		120	2500	1207	953	1238	851	612	1797
LT10		48	2872	1035	892	1298	851	667	1844
LT12		48	3177	1035	892	1298	851	667	1844

## LTB Machine Floor Plan



Model	Unit	A	B	C	D	E	F	G	H
LTB8	mm	745	2755	4359	859	674	1662	2282	620
LTB10		745	2755	4359	859	674	1662	2282	620
LTB12		745	3534	5124	845	765	1726	2346	620
LTB12L		745	4014	5594	835	765	1726	2346	620

Model	Unit	I	J	K	L	M	N	O	P	Q	R	S	T	U
LTB8	mm	400	724	886	524	-	221	1956	2755	3614	485	374	764	1342
LTB10		400	724	886	524	-	221	1956	2755	3614	485	374	764	1342
LTB12		400	730	886	589	529	400	1956	3534	4379	475	370	793	1269
LTB12L		400	730	886	783	715	500	1956	4014	4849	465	370	793	1269

## LT Specifications

Model	Unit	LT-6	LT-8	LT-10	LT-12
CNC Control system	-	Fanuc 0i-TF	Fanuc 0i-TF	Fanuc 0i-TF	Fanuc 0i-TF
<b>X/Z axis Travel</b>					
X axis Travel	mm	190	190	230	230
Z axis Travel	mm	360	610	590	820
<b>Spindle</b>					
Spindle Bore Hole	mm	Ø56	Ø62	Ø86	Ø105
Spindle Taper	rpm	A2-5	A2-6	A2-8	A2-8
Spindle Speed	rpm	6,000	4,500	3,500	2,500
<b>Motor</b>					
Spindle Motor	Kw	11/15	11/15	15/18.5	15/18.5
X/Z Motor	Kw	2/3	2/3	3/3	3/3
<b>Working Area</b>					
3 Jaw Chuck	inch	6	8	10	12
Max Swing over Bed	mm	560	560	600	600
Max Working Diameter	mm	320	320	420	420
Max Working Length	mm	320	570	540	760
Bar Diameter	mm	Ø45	Ø52	Ø75	Ø91
<b>Rapid Travel</b>					
Rapid ravel(X/Z)	m/min	30/30	30/30	30/30	30/30
<b>Turrent</b>					
Turrent Type	-	servo	servo	servo	servo
Tools Capacity	tools	10	10	10	10
Square Tool Shank	mm	20	20	25	25
Boring Bar Shank Diameter	mm	32	32	40	40
<b>Tailstock</b>					
Tailstock	-	Programmable	Programmable	Programmable	Programmable
Quill Bore Taper	-	MT#4	MT#4	MT#5	MT#5
Quill Diameter	mm	65	65	85	85
<b>Accuracy</b>					
Positioning Accuracy	mm	±0.005	±0.005	±0.005	±0.005
Repeating Accuracy	mm	0.003	0.003	0.003	0.003
<b>Others</b>					
Machine Size(LxWxH)	mm	3928x2420x2205	4585x2600x2205	4450x2600x2265	5200x2600x2265
Net Weight	kg	3,380	3,720	5,430	6,100

\* All specifications design and characteristics shown in this catalogue are subject to change without prior notice.

\* L.K. Machinery Corp. will not be legally responsible for any unauthorized modification on the machine or other equipment.

### Standard Equipment

- Fanuc 0i-TF
- Linear ways
- Cross-back 30°
- Rapid Travel 30/30m/min
- Servo Turret 10 tools
- Programmable Tailstock
- Positioning Accuracy ±0.005mm
- Repeating Accuracy 0.003mm

### Optional Accessories

- Mitsubishi M80
- Siemens 828D
- Servo Turret 12 tools
- Linear Scale on X/Z axes
- Auto Tool Measurement
- Barfeeder
- Workpiece collector
- Oil Skimmer

## LTB Specifications

Model	Unit	LTB-8	LTB-10	LTB-12	LTB-12L
CNC Control system	-	Fanuc 0i-TF	Fanuc 0i-TF	Fanuc 0i-TF	Fanuc 0i-TF
<b>X/Z axis Travel</b>					
X axis Travel	mm	265	265	265	265
Z axis Travel	mm	600	600	1200	1650
<b>Spindle</b>					
Spindle Bore Hole	mm	Ø62	Ø92	Ø105	Ø105
Spindle Taper	rpm	A2-6	A2-8	A2-8	A2-8
Spindle Speed	rpm	4,200	3,000	2,500	2,500
<b>Motor</b>					
Spindle Motor	kw	11/15	15/18.5	15/18.5	15/18.5
X/Z Motor	kw	2/3	3/3	3/3	3/3
<b>Working Area</b>					
3 Jaw Chuck	inch	8	10	12	12
Max Swing over Bed	mm	700	700	700	700
Max Working Diameter	mm	450	450	450	450
Max Working Length	mm	600	600	1200	1600
Bar Diameter	mm	Ø52	Ø75	Ø92	Ø92
<b>Rapid Travel</b>					
Rapid ravel(X/Z)	m/min	20/20	20/20	20/20	20/20
<b>Turrent</b>					
Turrent Type	-	servo	servo	servo	servo
Tools Capacity	tools	12	12	12	12
Square Tool Shank	mm	25	25	25	25
Boring Bar Shank Diameter	mm	40	40	40	40
<b>Tailstock</b>					
Tailstock	-	Programmable	Programmable	Programmable	Programmable
Quill Bore Taper	-	MT#4	MT#5	MT#5	MT#5
Quill Diameter	mm	80	80	80	80
<b>Accuracy</b>					
Positioning Accuracy	mm	±0.01	±0.01	±0.01	±0.01
Repeating Accuracy	mm	0.005	0.005	0.005	0.005
<b>Others</b>					
Machine size(LxWxH)	mm	4359x2282x1956	4359x2282x1956	5124x2346x1956	5594x2346x1956
Net Weight	kg	5,200	5,350	6,000	6,300

\* All specifications design and characteristics shown in this catalogue are subject to change without prior notice.

\* L.K. Machinery Corp. will not be legally responsible for any unauthorized modification on the machine or other equipment.

### Standard Equipment

- Fanuc 0i-TF
- Boxways
- Cross-back 45°
- Rapid Travel 20/20m/min
- Servo Turret 12 tools
- Programmable Tailstock
- Positioning Accuracy ±0.01mm
- Repeating Accuracy 0.005mm

### Optional Equipment

- Mitsubishi M80
- Siemens 828D
- Linear Scale on X/Z axes
- Auto Tool Measurement
- Barfeeder
- Workpiece collector
- Oil Skimmer